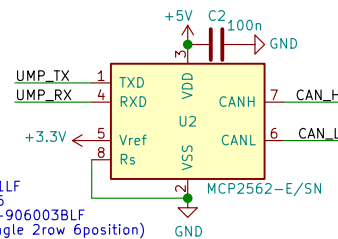
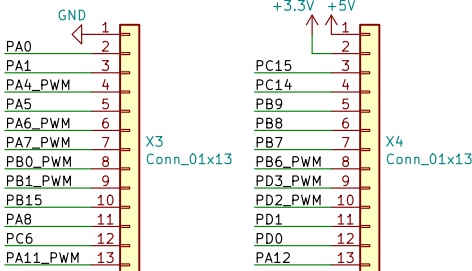


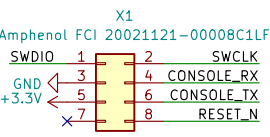
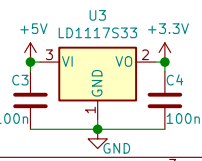
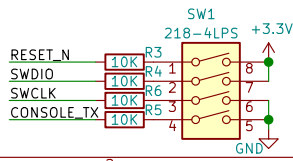
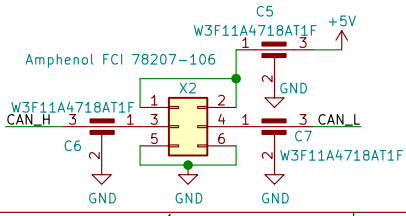
Space to put your own design

For a first prototype you can reuse the existing layout and later optimize for board size or actuator / sensor placing.



- X2 Alternatives:
- 3M 30306-5002HB
 - Amphenol FCI 75867-331LF
 - Amphenol FCI 78207-106
 - Amphenol FCI 10129382-906003BLF (Shrouded 2.54mm right-angle 2row 6position)

Before configuring the IO's configure Pull-Down on RESET_N(PF2) and SWDIO(PA13) and configure Pull-Ups on CONSOLE_TX(PA9) and SWCLK (PA14).



Sheet: /	
File: LcdBridge.sch	
Title:	
Size: A4	Date:
KiCad E.D.A. kicad 5.0.2-bee76a070ubuntu18.04.1	
Rev: 1/1	